

CERTIFICATE OF LOCATION OF GOVERNMENT CORNER

NORTHEAST Corner of Section 13, Township 106, Range 40, 5TH P.M.

STATE OF MINNESOTA, County of MURRAY

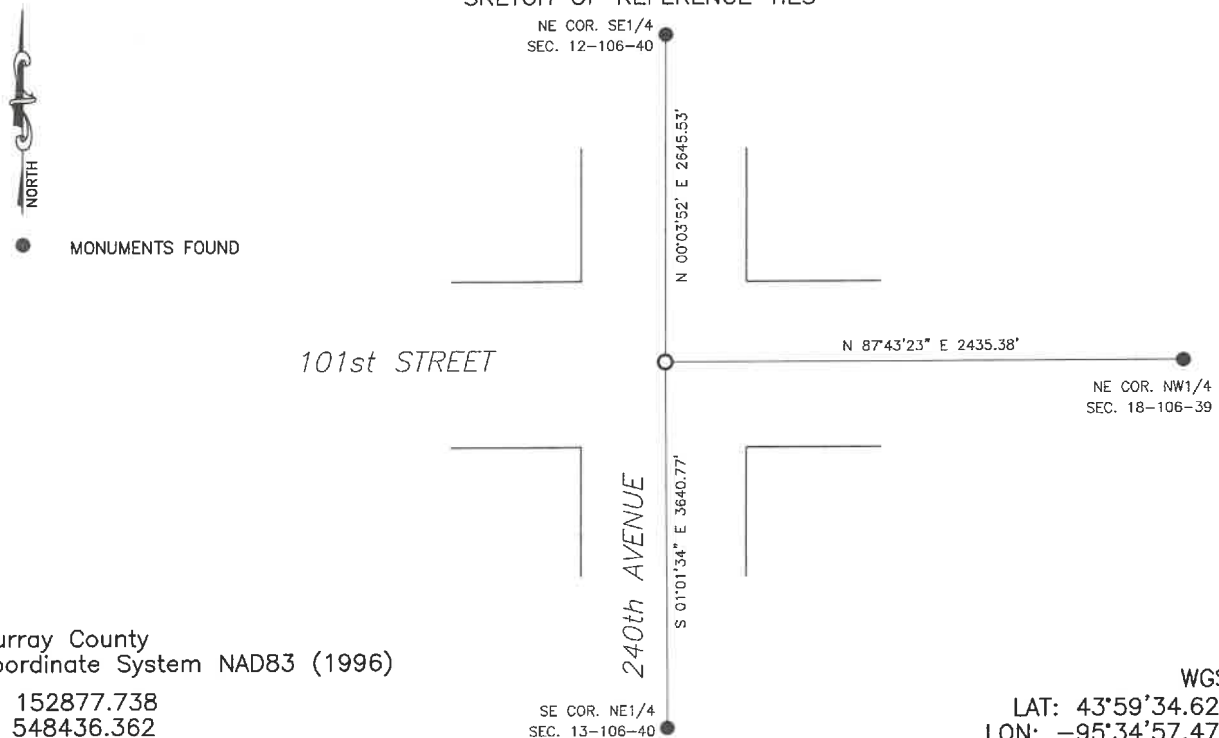
At the corner location shown on the sketch:

☒ On 7/24/2024 found a LARGE FIELD STONE
DATE

☒ left monument as found, ☐ lowered monument, ☐ removed monument (explain)

☒ On 1/30/2025 placed a 5/8" IRON WITH SEAL #43844 OVER TOP OF THE STONE
DATE

SKETCH OF REFERENCE TIES



Statement of evidence relative to this corner location is on back of page.

I hereby certify that this document and the data contained herein was prepared by me or under my direct supervision.

Daniel L. Buettel
License No. 43844

3/12/2025
DATE

MAR 13 2025

MURRAY COUNTY RECORDER

Statement of Evidence

NORTHEAST CORNER SECTION 13, T106N, R40W OF THE 5th P.M.

In 1861 J.W. Myers did the original survey of the township lines.

A survey of section 18-106-39 by J.W. Woolstencroft, dated May 19, 1898, notes a government mound and stone at the corner.

County Records dated May 5, 2008 notes Zieske Land Surveying located an iron pipe with seal #23008 at the corner.

On July 24, 2024 Bueltel-Moseng Land Surveying dug with a backhoe and found large field stone.

Returned on January 30, 2025 and set a $\frac{5}{8}$ " iron with seal #43844 overtop of the stone.